

# 建筑模糊性 (1)

WEI WEN

nARCHITECTS

千高原 @ 乐人居酒屋



*Do Ho Suh, Staircase*





*Nina Katchadourian,  
'Landscapes' from Seat Assignments*





*Alison Shotz, The Mirror Fence*





**micro-MACRO  
LIVING**

**MACRO-micro  
PUBLICS**





CANOPY, MoMA PS1

micro-MACRO  
LIVING



SWITCH BUILDING

MACRO-micro  
PUBLICS



# SWITCH BUILDING, MANHATTAN, NEW YORK

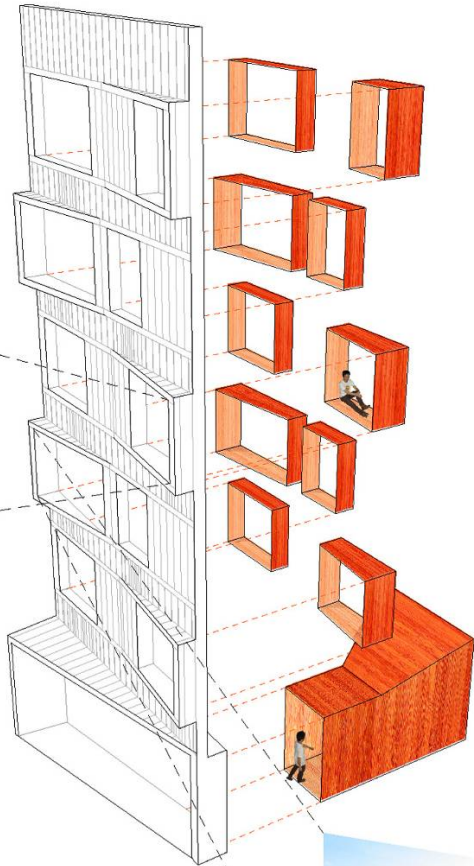


*AIA NY Building Type Merit Award*





SOUTH VIEW



NORTH VIEW







109

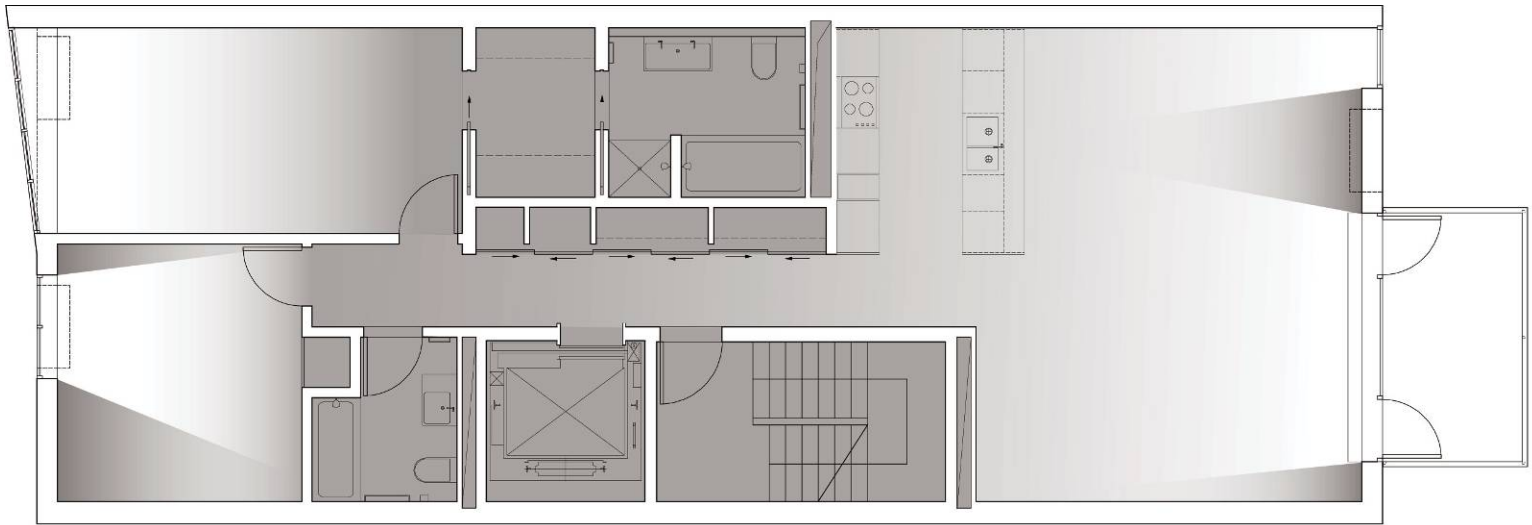
Community Technology Center

Community Technology Center

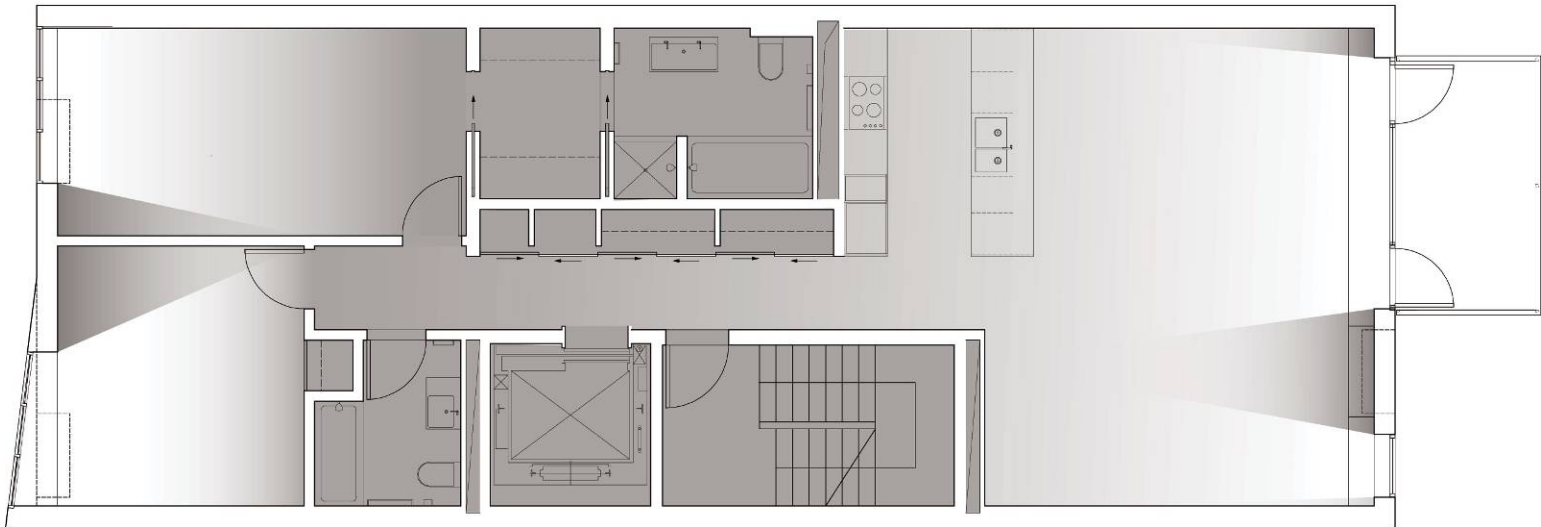




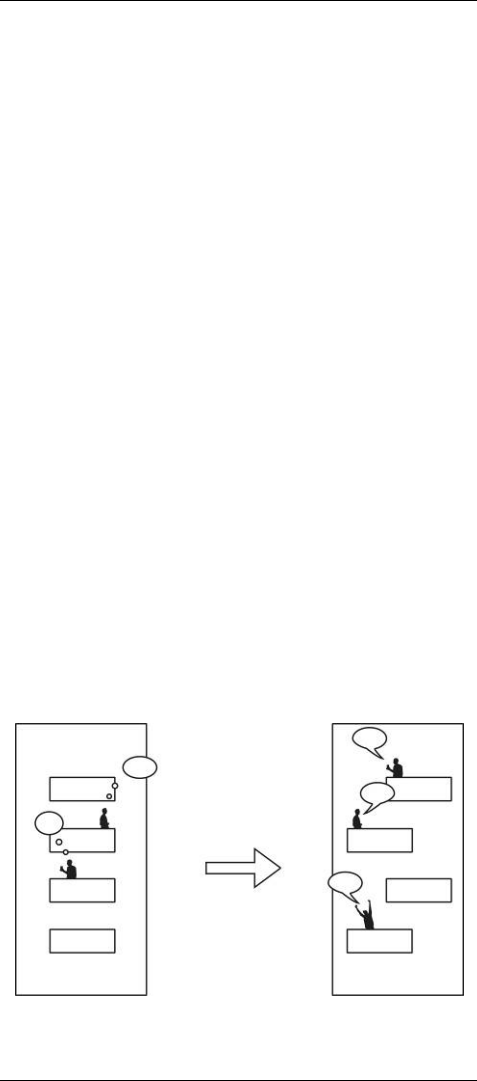




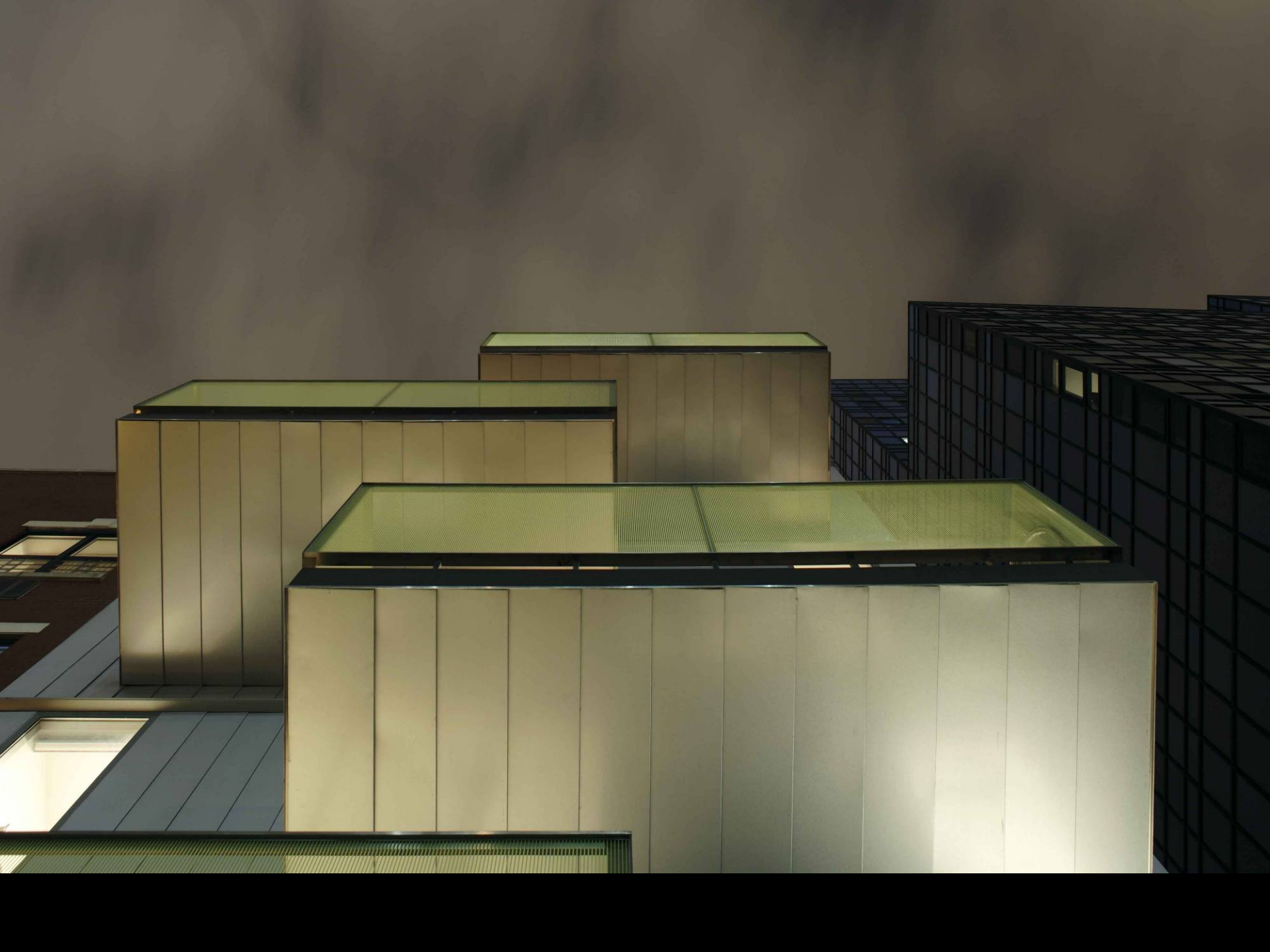
*Each apartment has unique in its light qualities & views to the city.*











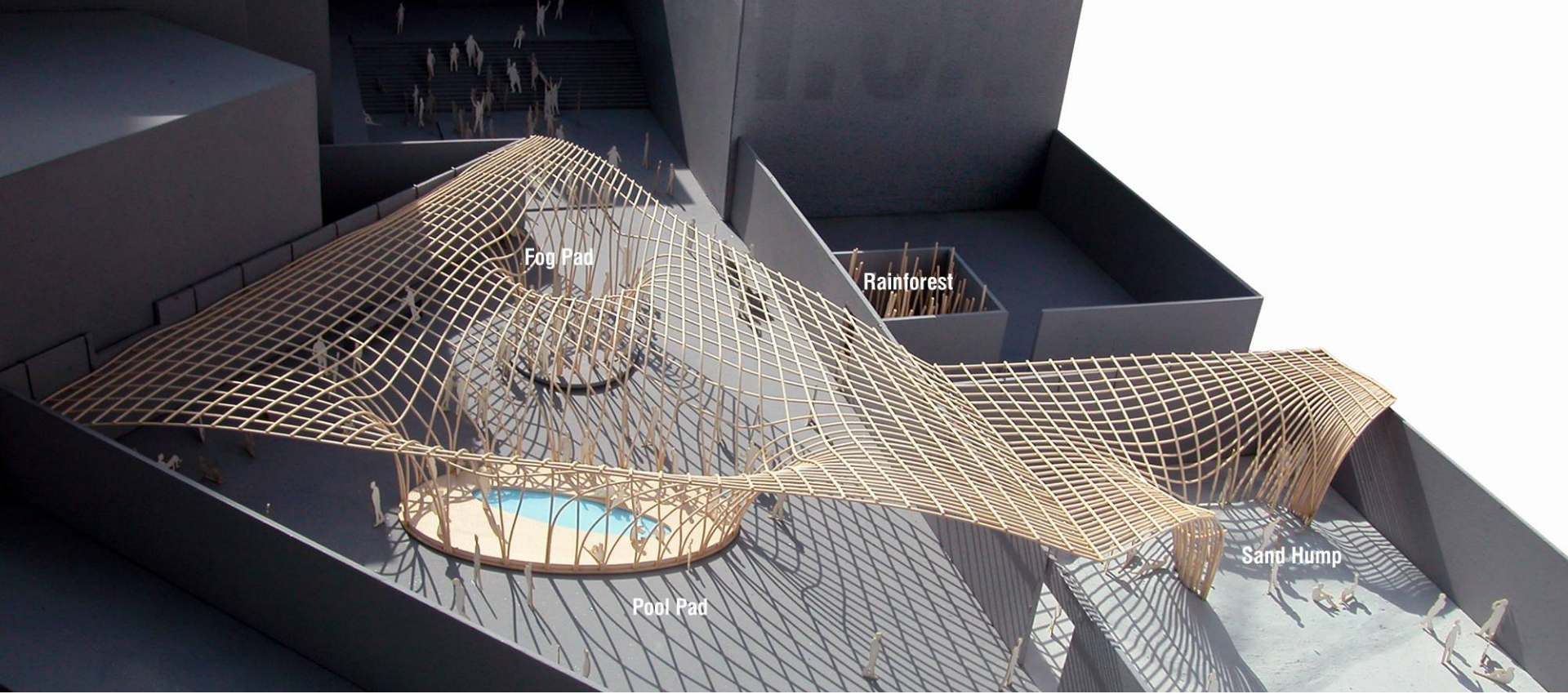


# CANOPY, MoMA/PS1, QUEENS, NEW YORK



*1<sup>st</sup> Prize, MoMA PS1 Young Architects Program  
AIA NY Design Honor Award*





**CANOPY** (deep landscape)

*Dips in the canopy provoke different modes of lounging in four distinct environments.*

**Sand Hump**



☀️ 100 deg 🌧️ 5% humidity

**Pool Pad**



☀️ 90 deg 🌧️ 15% humidity

**Fog Pad**



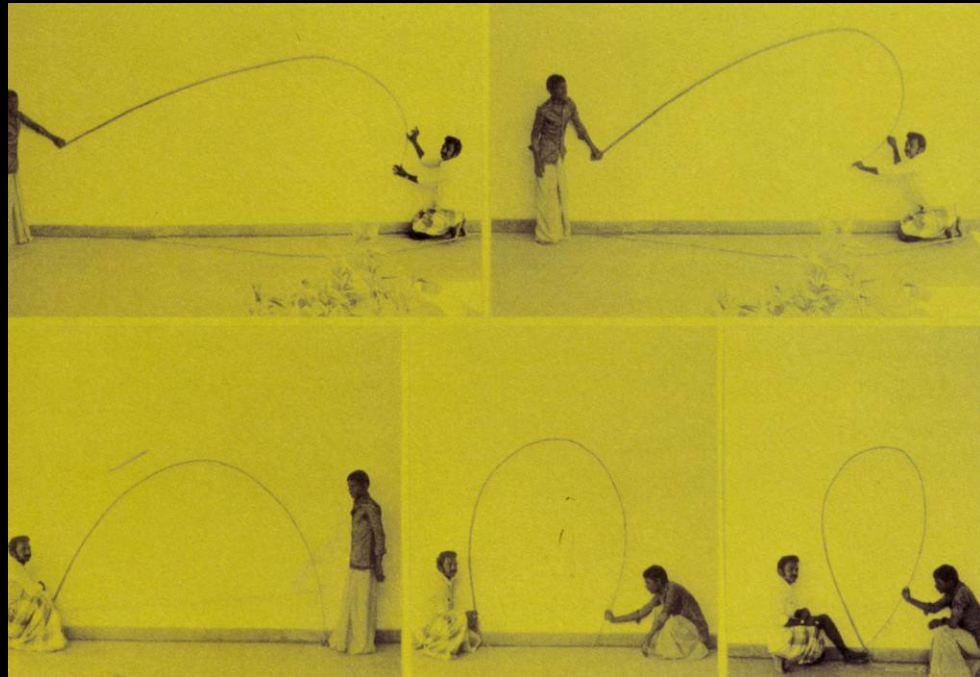
☀️ 80 deg 🌧️ 90% humidity

**Rainforest**



☀️ 70 deg 🌧️ 100% humidity













*june*



*august*



**Phyllostachys Aurea**





ONE WAY

NO PARKING ANYTIME

T698686













































**CARMEL PLACE**

**micro-MACRO  
LIVING**



**CHICAGO NAVY PIER**

**MACRO-micro  
PUBLICS**



# CARMEL PLACE (MY MICRO NY), NEW YORK CITY



*1<sup>st</sup> Prize, adAPT NYC Competition  
AIA NY Design Honor Award  
AIA Andrew J. Thomas Pioneer in Housing Award  
Brick in Architecture, Gold Award*



A large crowd of people is gathered on a grassy area at dusk. Many people are sitting on blankets or chairs, facing towards the right side of the frame. In the background, a tall, ornate building with spires is visible against the twilight sky. The overall atmosphere is that of a large outdoor event or festival.

# NEW YORKERS DREAM ABOUT BIG SPACES





**BUT WE  
MAKE IT  
IN MICRO SPACES**



WE'VE  
**ADAPTED**  
TO NEW YORK





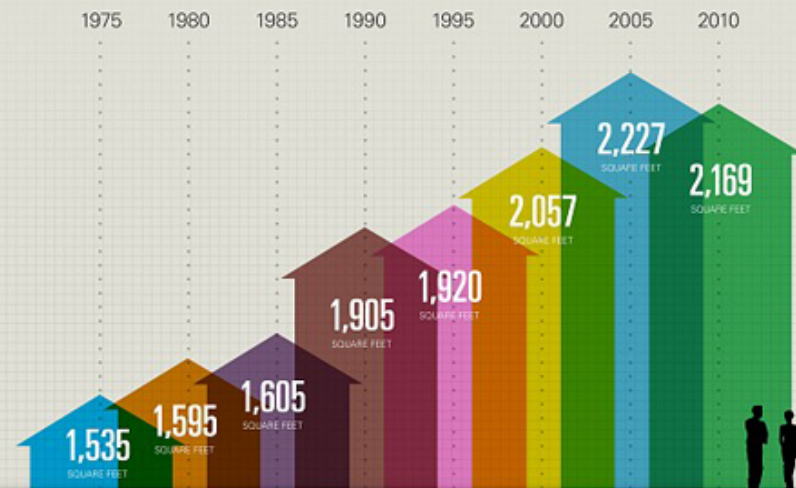
**NOW IT'S TIME**  
NEW YORK  
**ADAPTED TO US**





# AVERAGE HOME SQUARE FOOTAGE

in the United States



© 2011 Engineered Wood

SOURCE: [census.gov](http://census.gov)



## How We Live Now

**82%** Non-nuclear families

**46%** Single person households (Manhattan)

**33%** Single person households (NYC)

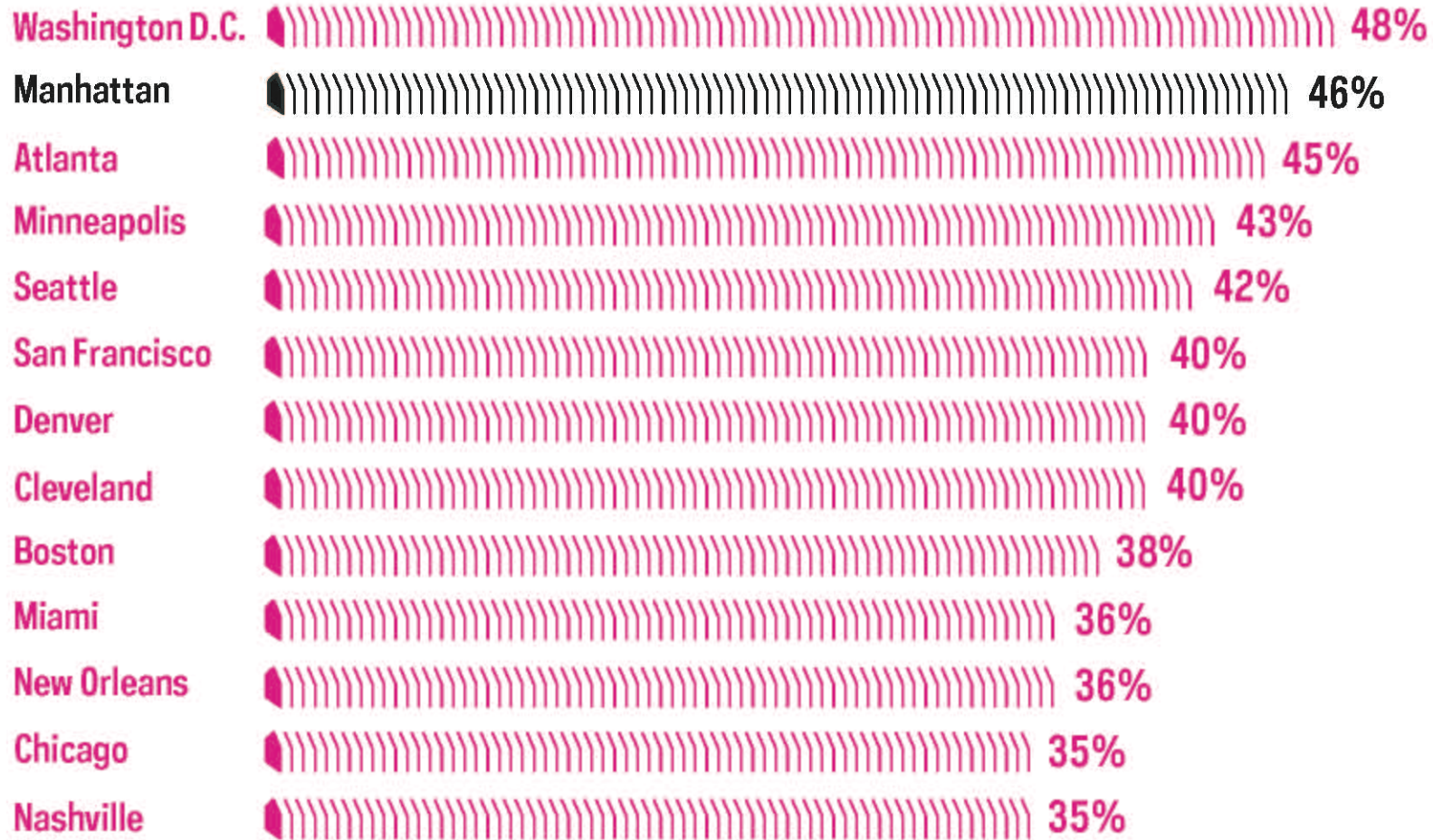
**24%** Shared households

**17%** Couples without children

**10%** Single parents + children

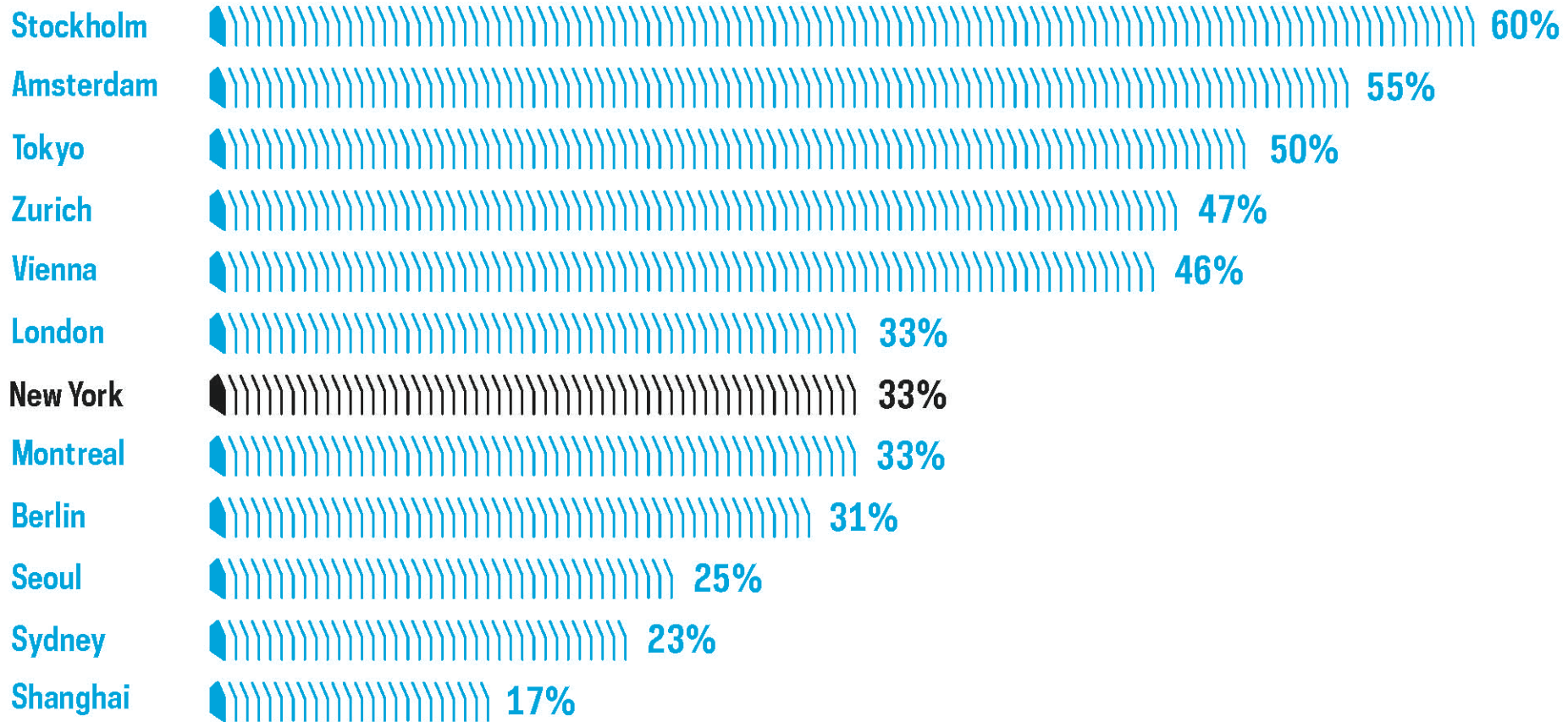


# Percent of single person households nationwide





# Percent of single person households worldwide







**THE OPTIONS: ILLEGAL SUBLETS...?**





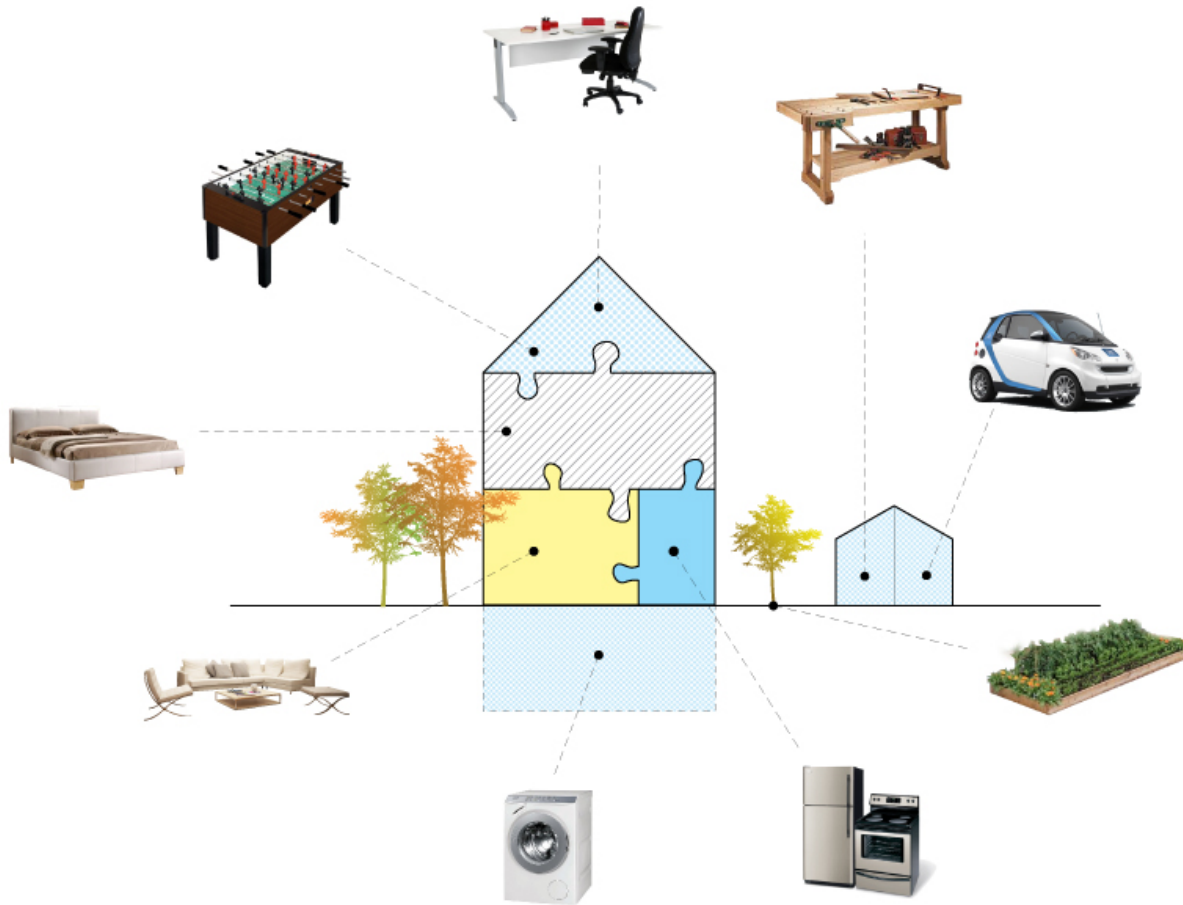
**... OR SUBURBAN SPRAWL?**





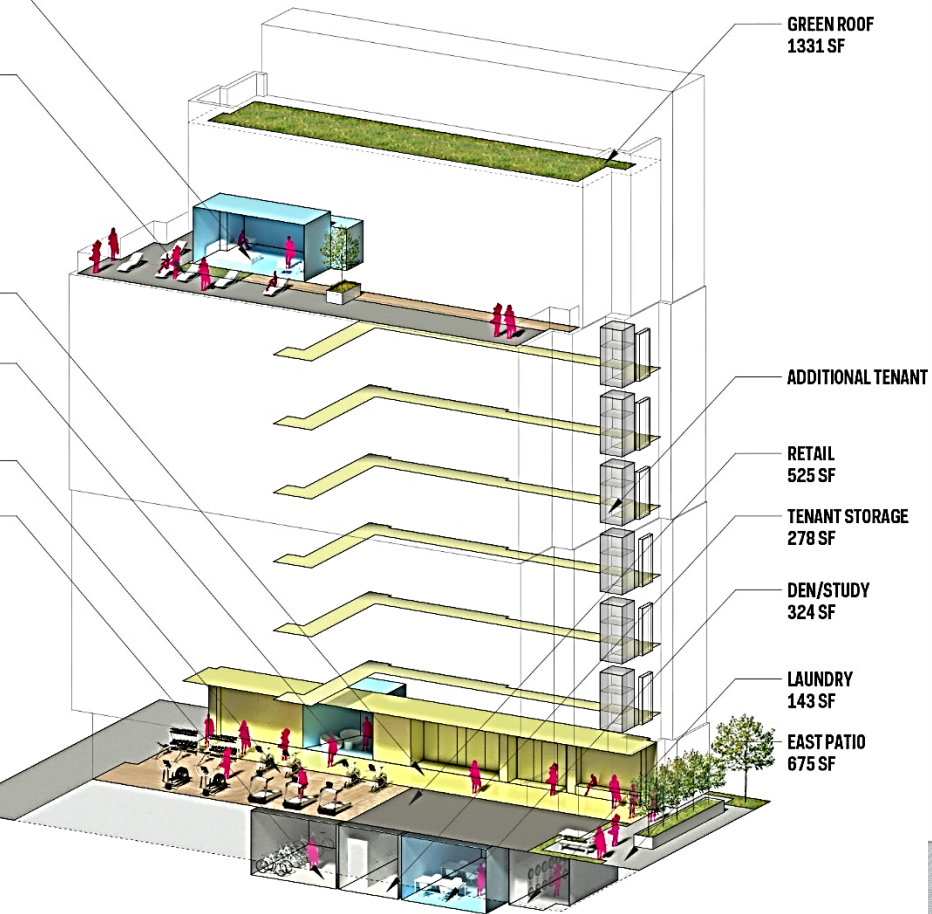
# adAPT NYC COMPETITION





# THE DISPERSED HOME





# THE DISPERSED HOME



BELLEVUE  
SOUTH PARK



MOUNT CARMEL PLACE



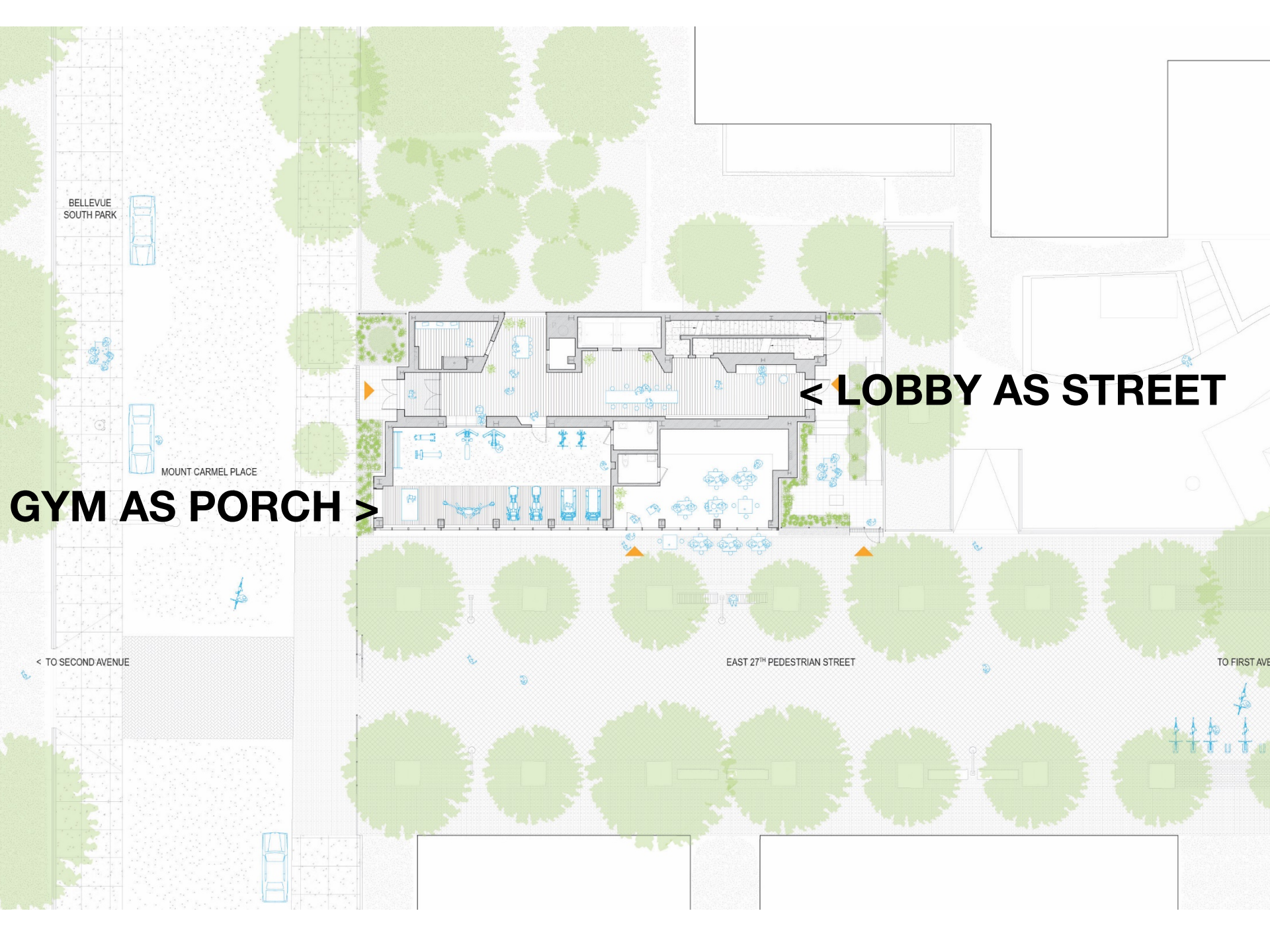
**GYM AS PORCH >**

**< LOBBY AS STREET**

< TO SECOND AVENUE

EAST 27<sup>TH</sup> PEDESTRIAN STREET

TO FIRST AVE







**GYM AS PORCH**

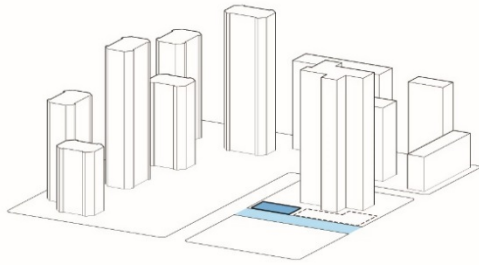




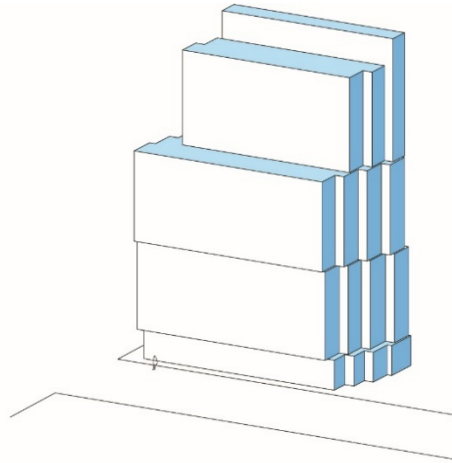
**LOBBY AS STREET**



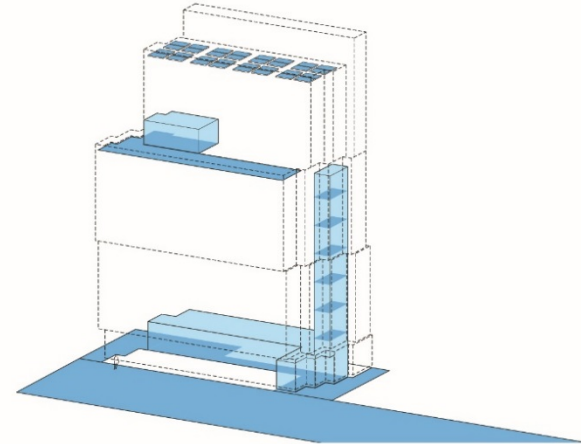
# MACRO TO MICRO STRATEGIES



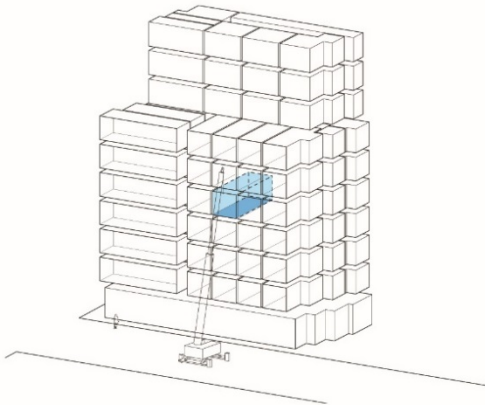
**OUR COMMUNITY**



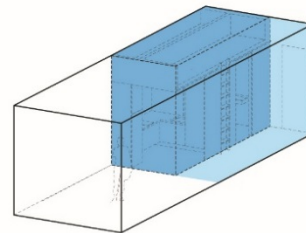
**OUR MICRO TOWERS**



**OUR SHARED SPACES**



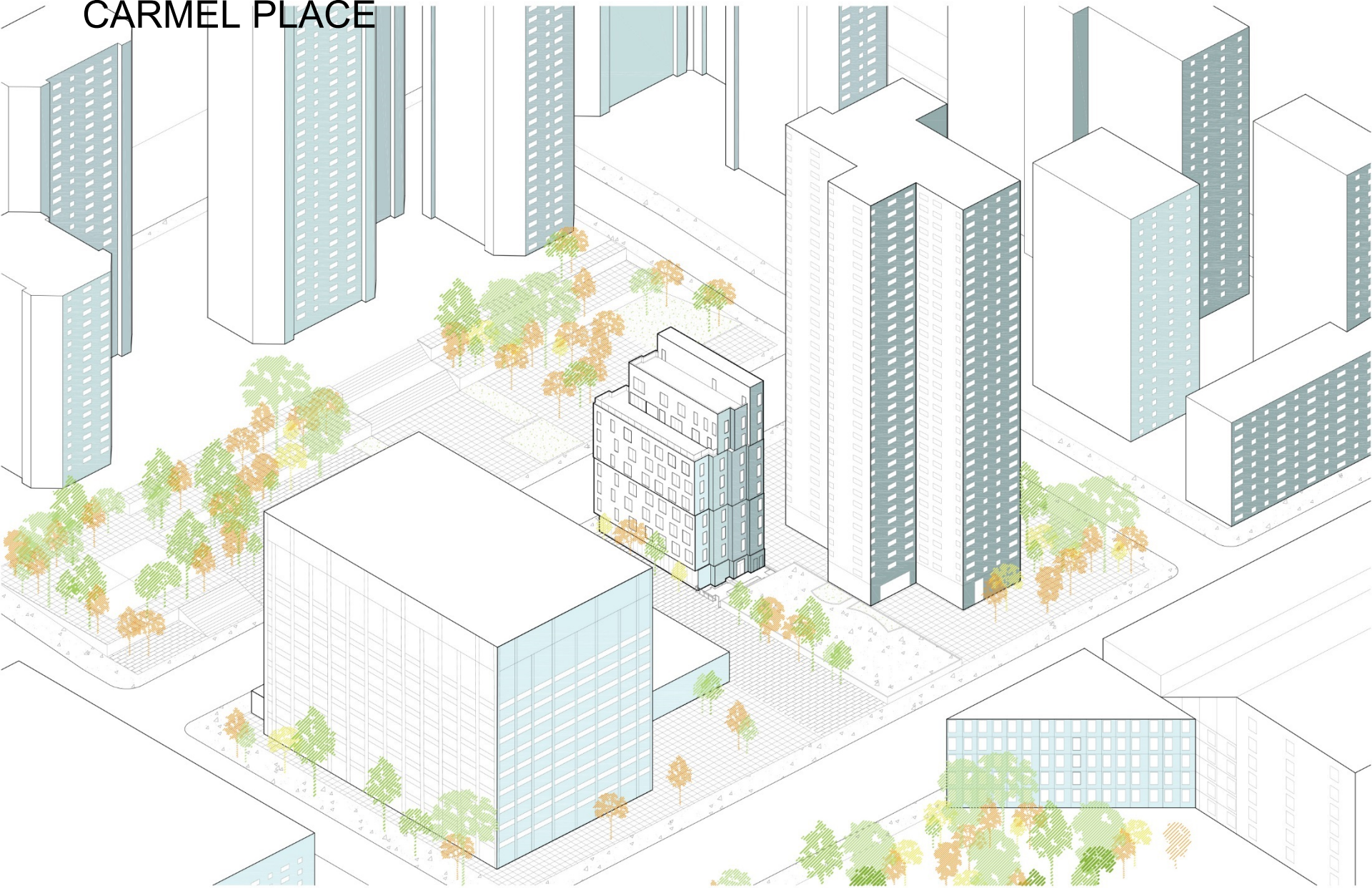
**OUR MICRO MODULES**



**MY MICRO UNIT**



# CARMEL PLACE



































TLC200 2015/04/13 09:12:16

**MODULAR FACTORY, BROOKLYN, NY**











